

# San Miguel Jacket

BSS110

- \* Easy Shawl Collar (no corner)
- \* Make from one fabric or many
- \* Optional Lining
- \* Casual, Fuller Fit



View B



View A

# San Miguel Jacket

A beautiful shawl collar that is easy to make combined with decorative piecing for the front band and cuffs make this jacket a great additional to any wardrobe. Make it from many fabrics or from a single beautiful fabric. Jacket is a 'Box Style' with a casual fit - the shoulders are fitted, sides are straight and the sleeves have a nice tailored look, but are a bit fuller for a comfortable fit. Jacket can be lined or unlined.

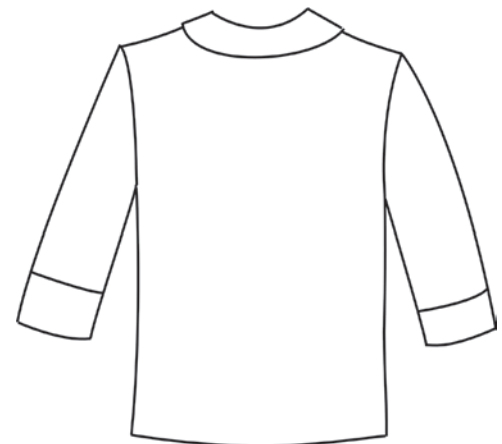
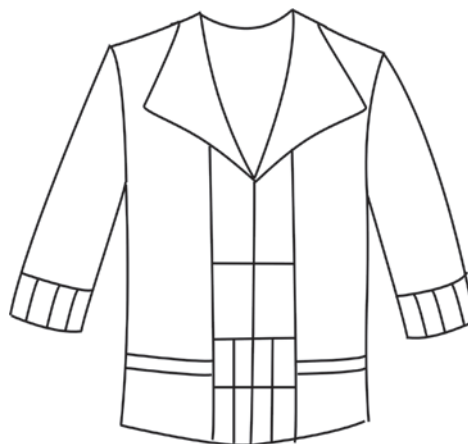


Yardage Requirements		S	M	L	XL
		(4-6)	(8-10)	(12-14)	(16-18)
<b>View A (Pieced &amp; Lined)</b>					
Lower Front Pieced Panel & Pieced Cuffs - 4 to 5 fabrics total. <i>For fabrics that you choose for the Collar - (Upper and Under), you will need 2/3 yard - for the remaining 2 or 3 fabrics, you will need 1/3 yard each</i>					
Body/Sleeves	45"	2½ yds	2½ yds	2½ yds	2½ yds
	60"	1½ yds	1½ yds	1½ yds	1½ yds
Interfacing		1¼ yds	1¼ yds	1¼ yds	1¼ yds
Optional Inserts	45"	¾ yd	¾ yd	¾ yd	¾ yd
Lining	45"	2½ yds	2½ yds	2½ yds	2½ yds
<b>View B (All Same Fabric &amp; Lined)</b>					
Body & Facings	45"	2½ yds	2½ yds	3 yds	3 yds
	60"	2¼ yds	2¼ yds	2¼ yds	2¼ yds
Interfacing		1¼ yds	1¼ yds	1¼ yds	1¼ yds
Lining	45"	2½ yds	2½ yds	2½ yds	2½ yds
Optional Piping/Inserts	45"	¾ yd	¾ yd	¾ yd	¾ yd

**Extras:**  
4½ yards of ¼" Piping  
Filler

## Finished Measurements

	S	M	L	XL
Back Length	24½"	25"	25½"	26"
Bust	37½"	39½"	42½"	46½"
Waist	38½"	40½"	43½"	47½"
Hip	40"	42"	45"	49"



*This pattern and all instructions is copyrighted 2005 by Brensan Studios and The Brensan Group, LLC. All rights reserved. Please contact for permission to reprint any portion hereof. Website: [www.brensan.com](http://www.brensan.com)*

Published by *QuiltWoman.Com*

42 Nichols St., Suite 8  
Spencerport, NY 14559  
585-617-4866 Toll free 877-454-7967  
Fax 585-617-4868 [info@QuiltWoman.com](mailto:info@QuiltWoman.com)  
[www.QuiltWoman.com](http://www.QuiltWoman.com)



6 14657 99110 1